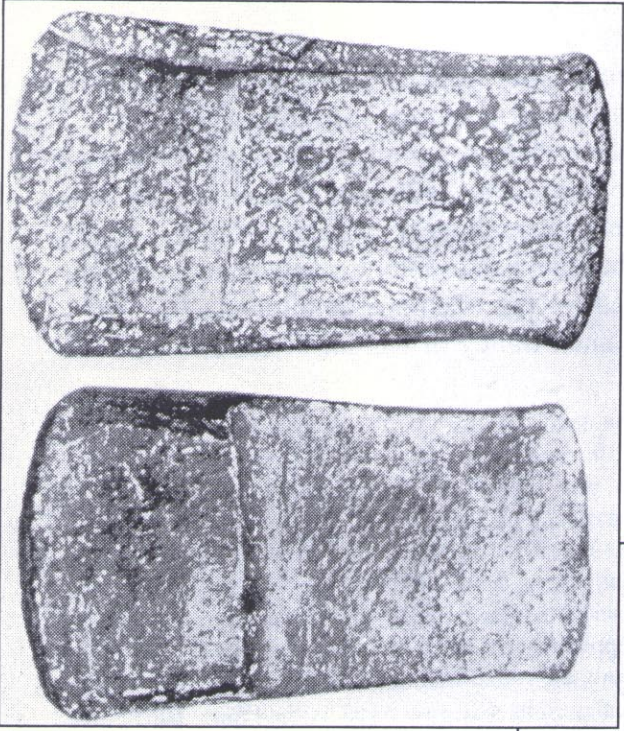


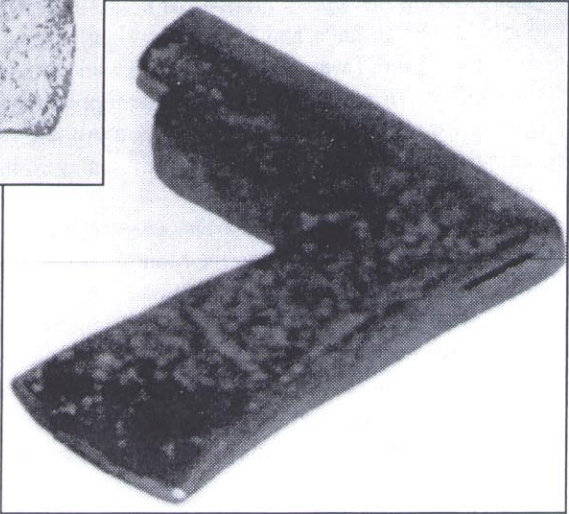
Courtesy of Milwaukee Public
Museum. from "Here Was
Vinland"

Above: Norse axes found in
Minnesota at Erhahl,
Right: 5 1/2lbs. edge 8 1/4 in.
At Norway Lake,
Left: 5 lbs. edge 16 in.



Left: Portlock, Ontario, cast
copper "spud," Weight 3 lbs 11
oz. Length 8 1/4 in.

Below: Norse Axe found in the
Keeweenaw Peninsula.



Courtesy of Wm Grasley. from
"Here Was Vinland"